

1

2

3

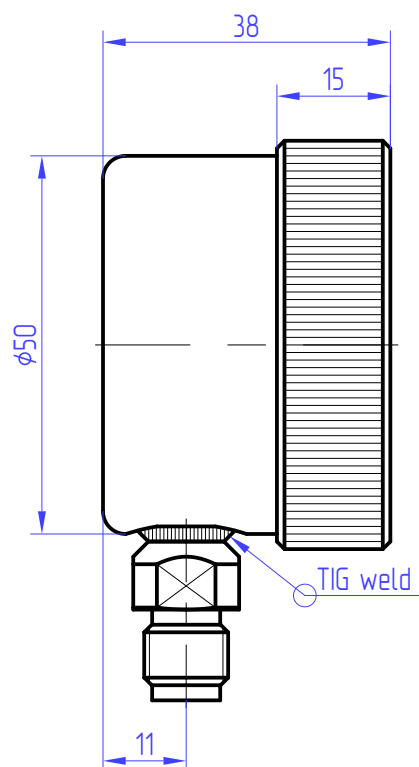
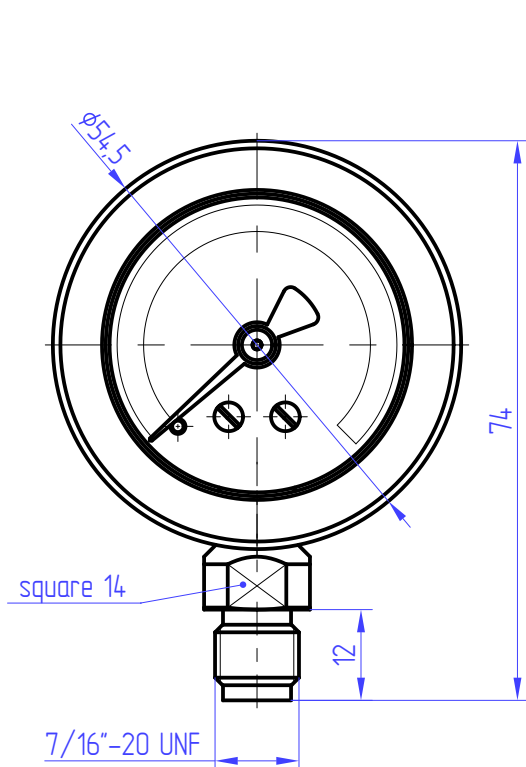
4

A

B

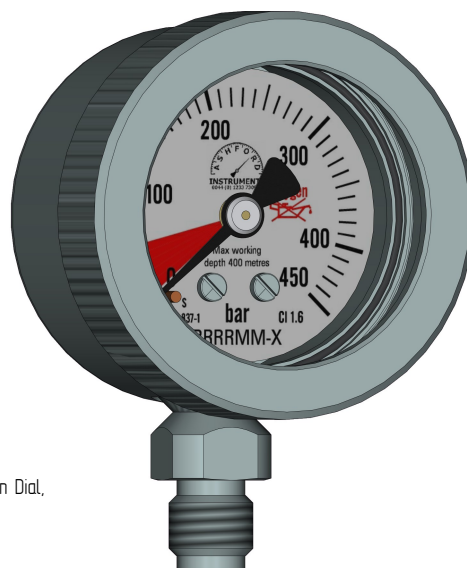
C


D



#### Description:

- 50mm Subsea Contents Pressure Gauge,
- Range 0-450 bar Single Scale,
- 0-50 bar Red Low Contents Zone Marked On Dial,
- Case & Bezel 316 Stainless Steel, Brass Movement,
- Stainless Steel Bourdon Tube,
- Dry Case, Safety Blow Out Device In Back Of Case. Degreased,
- Window 10mm Thick Toughened Float Glass,
- Connection 1/8" BSP Male Bottom Entry, Restrictor Screw,
- Aluminium Dial Black On White Luminous,
- "Ashford Instrumentation 0044(0) 1233 730 999" On Dial,
- "Crossed Oilcan-Oxygen" On Dial, "S" On Dial. EN837-1" On Dial, "Cl 1.6" On Dial,
- Individual Serial Number On Dial,
- "Max working depth 400 metres" On Dial,
- Submersible To Depth 400m Sea Water,
- Suitable For Mixed Gas Diving.



				Dimensions	Drawn by:	Ing. Mrekaj		07.09.2017	
				54,5x74x38	Desig. by:	Ing. Mrekaj		07.09.2017	
				Material	Checked by:	-			
				Stainless steel					
				Stock	Note	Name	Signature	Date	
				-					
				Weight					
				320g /					
Modification #	Index	Date	Signature		-				
Company		Title			Scale	Paper size	Sheet		
		Pressure gauge $\phi 50$ Subsea - Robust Stainless Steel Dimensional scheme			1:1	A4	1/1		
					Drawing number			 	
					MM50K/51C/1,6/SUB				

1

2

3

4