



ASHFORD Instrumentation Ltd

Product Datasheet

Datasheet
HP5

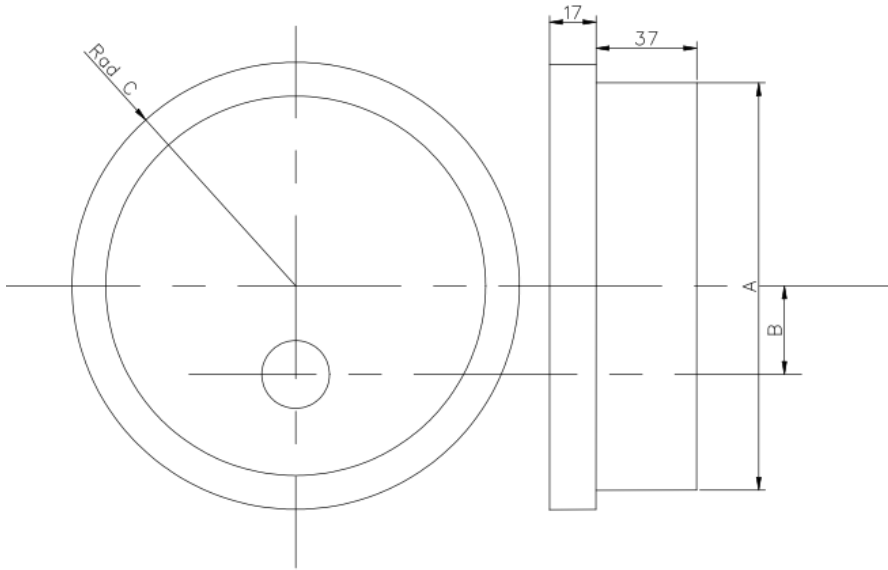
The Ashford Model HP5 Series High Pressure Full Safety Pattern Gauge.

These instruments are suitable for all gaseous and liquid media that are not highly viscous and that will not solidify, crystallize. This gauge is designed for Extreme High Pressure applications according to the European Standard EN837-1/S3 and ASME. B40.1.



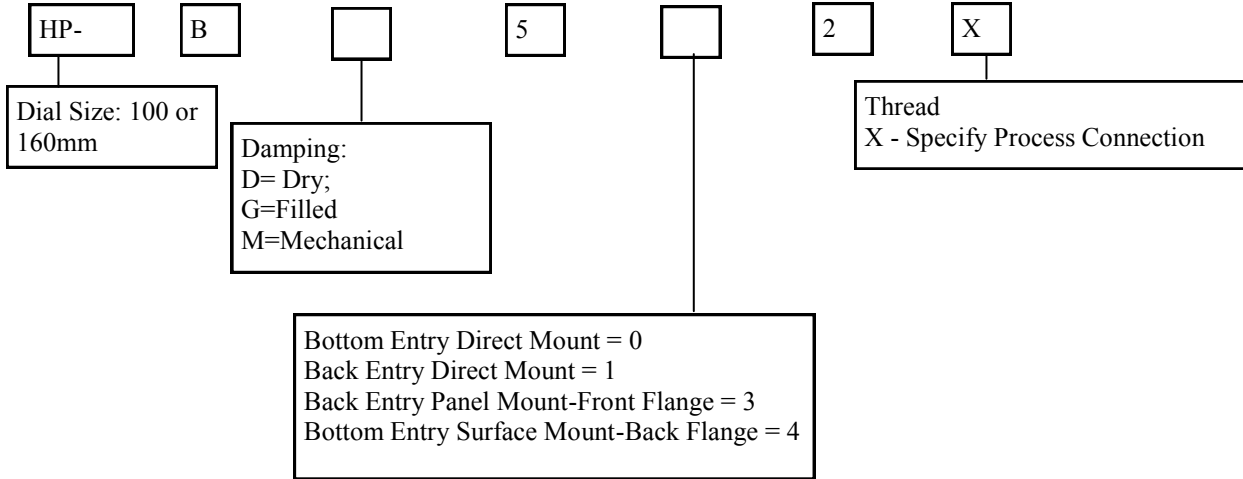
SPECIFICATIONS:

- **Model Number:** HP5 Series
- **Nominal Sizes:** 100mm or 160mm Diameter
- **Accuracy Class:** 1.0 (1.0% FSD)
- **Ranges:** 1400 Bar (20000 psi), 2000 Bar (30000 psi), 2800 Bar (40000 psi) or 0-4000 bar (60000 Psi)
- **Working Pressure:** Static Load 75% Scale
- **Over-Protection:(Short Period Only)** 10% Full Scale value
- **Process Temperature:** Medium +150C (Ambient -20 / + 60C)
- **Calibration Temperature:** 20C
- **Protection:** IP67
- **Connection:** Standard Connection 9/16-18 UNF-2B (HF4 1/4" High Pressure) or M16x1.5 Female
- **Measuring Element:** Ni-Span C Tube, 316 Stainless Steel Connector
- **Movement:** 316 Stainless Steel
- **Housing & Bezel:** 304 Stainless Steel Case & Bayonet Lock Bezel, Internal Solid Baffle Wall, Full Blow Out Back
- **Dial & Pointer:** Aluminium / Metal Black Pointer
- **Window:** Laminated Safety Glass
- **Mounting:** Direct Mount Bottom or Back Entry, Back Flange (Surface Mount) or Front Flange (Panel Mount).
- **Options**
 - Glycerine Filled Case, (Model BG5)
 - Alarm Contacts
 - Other Pressure Connections available



	100mm	150mm
A	103	150
B	33	33
C	59	83

Ordering Code:



EXAMPLE: HP100BG402X 1/4" HP

CONTACT US

Ashford Instrumentation Ltd
 Units 2-3 Fairview Industrial Park
 Hamstreet Road
 Ruckinge
 Kent
 United Kingdom
 TN26 2PL

Tel: 0044 (0)1233 730999
 Fax: 0044 (0)1233 731133

sales@ashfordinstrumentation.com

